

# Superior Training from TYMCO



The 3500 square foot, temperature controlled TYMCO Training Center provides space for demonstrations on an operational sweeper and systems components.



Attendees review components of the pick-up head assembly during removal and installation.



Instructor reviews proper maintenance, removal and installation of the blower assembly.



A Service School attendee receives her TYMCO Certificate of Completion.

## Highlights of the TYMCO Service School

- The Regenerative Air System
- Servicing the Blower, Dust Separator and Pick-up Head
- Hydraulic, Electrical and Water System Review
- Rebuild and Repair Small Parts and Components
- Using the BlueLogic® Control System
- Manufacturing Facility Tour
- Certificates of Completion Awarded to Attendees
- 30 Schools Scheduled per Year
- Daily Ground Transportation to and from the Hotel
- Lunch is Provided
- Register to Attend on TYMCO.COM

This product is protected by numerous U.S. and International Patents.

Specifications subject to change without notice.

## Convenient Dealer Service Centers

In over 50 U.S. and international locations, you receive on-the-spot parts and service from TYMCO's network of dealers.

## TYMCO Builds a Model to Fit your Cleaning Needs



**MODEL 600® COMDEX®**  
Street Sweeper



**MODEL DST-6®**  
Dustless Sweeping Technology



**MODEL DST-4®**  
Dustless Sweeping Technology



**MODEL 500x®**  
High Side Dump Street Sweeper



**MODEL 600® CNG**  
Compressed Natural Gas Powered



[www.tymco.com](http://www.tymco.com)  
**1-800-258-9626**



**MODEL 435®**  
Mid-Sized Street Sweeper



**MODEL HSP®**  
High Speed Performance for Airport Runways  
Sweeper chassis models may change without notice.

**TYMCO REGENERATIVE AIR SWEEPERS are South Coast AQMD Rule 1186 PM<sub>10</sub> Certified**  
0819 - 5M - 01SM © TYMCO, Inc. 2019



**MODEL 210®**  
Parking Lot Sweeper



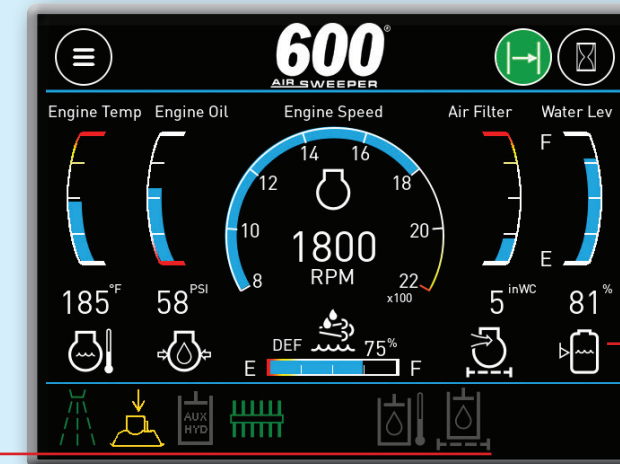
# BlueLogic® Control System



TYMCO, the inventor of the Regenerative Air System, delivers industry-leading technology with its BlueLogic Control System! BlueLogic is the sweeper multiplex electronics system that controls sweeper functions as well as provides On-Board Diagnostics (OBD). The BlueLogic Display provides valuable information including: hour meters, operational messages, service reminders, event logs and sweeper statistics such as fuel usage, water usage, and sweeping mileage.

## Sweeper Gauges

Digital gauges on the display enhance operator feedback and reduce overall wiring.



## Pedestal Mounted In-Cab Display

The adjustable pedestal mount allows the operator to position the color touchscreen display for the best viewing conditions.

## Home Page

The BlueLogic® Display Home Page contains standard gauges for the auxiliary engine RPM, engine oil temperature, engine oil pressure, engine air filter restriction (Optional on Models 210/435), and battery voltage.

## High Resolution Color Touchscreen Display

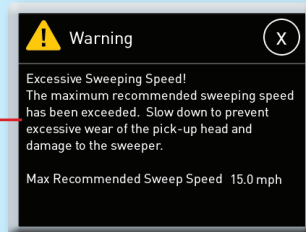
Navigation is very intuitive and allows quick access to menu pages such as User Settings, Sweeper Statistics, and Engine Fault Status. (The BlueLogic Display is available on select models)

## Sweeper Icons

Sweeper function icons on the bottom bar of the display illuminate to indicate function status and enhance operator feedback.

## Visual Messages

The in-cab display provides visual messages to convey information about engine warnings, sweeper information, engine and sweeper service reminders, among other features. Many of these trigger an audible alarm as well.

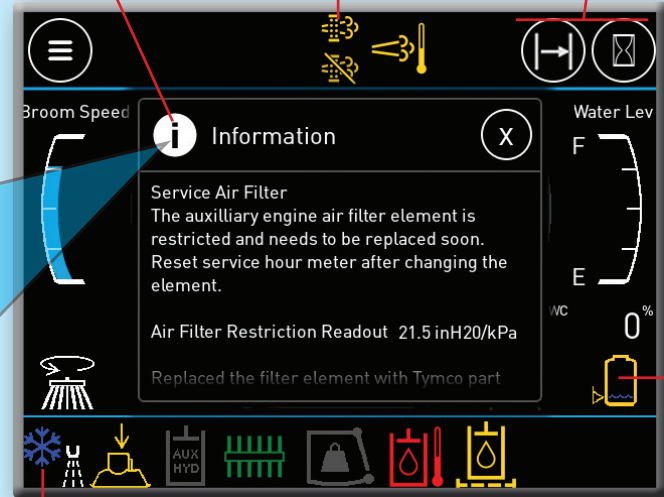


## Overspeed Warning

System delivers an audible and visual warning on the BlueLogic Display if sweeper is operating above a set configurable speed (8-25 mph).

## Engine Icons

Auxiliary Engine Icons on the top bar of the display replace the sweeper logo when active.



## Hot Buttons

The top right of the display Home Page includes "Hot Buttons" that navigate the operator directly to the Sweeper Odometer and the Hour Meters Pages. The Sweeper Odometer "Hot Button" illuminates green when active.

## Low Water Audible Alarm

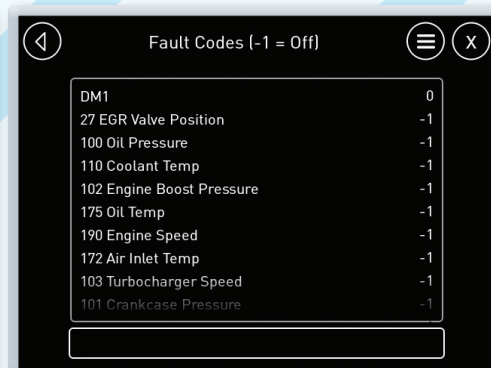
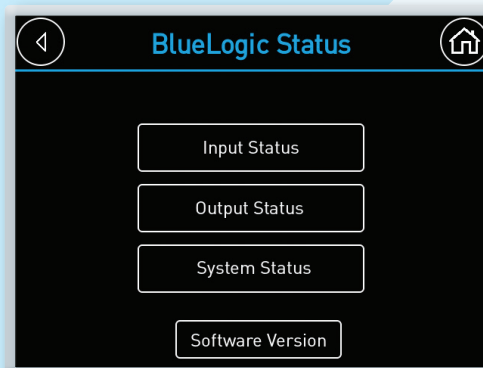
An alarm will sound twice intermittently when the main water switch is on and the water level is low.

## Winterization

Standard with the Dust Control System, the on-display guide directs the operator through a winterization procedure specific to the water system on the sweeper to help properly winterize the dust control system.

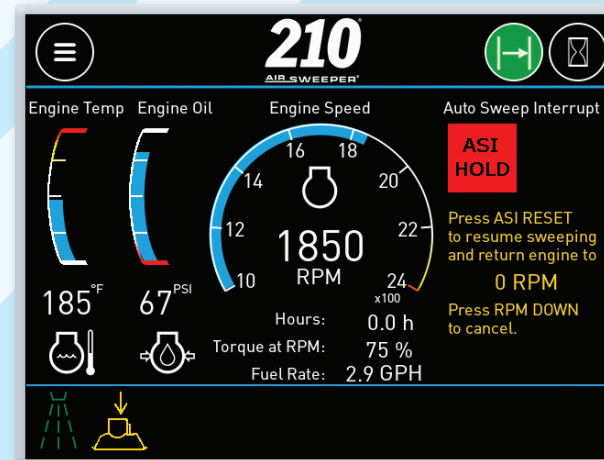
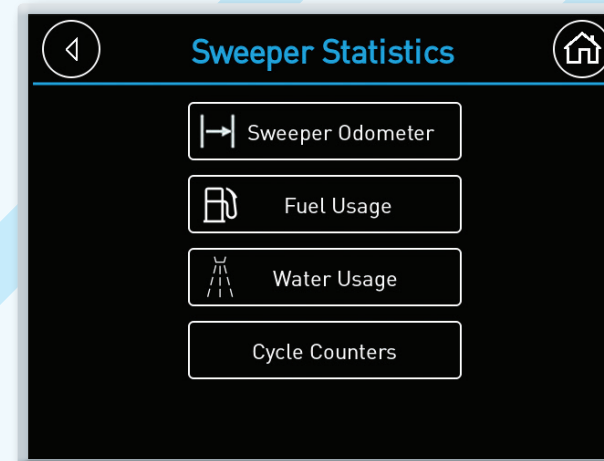
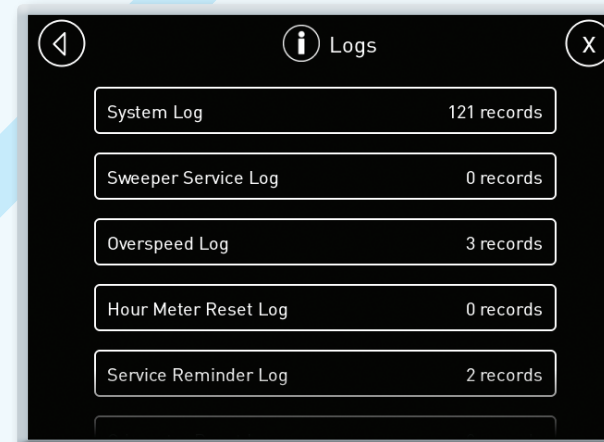
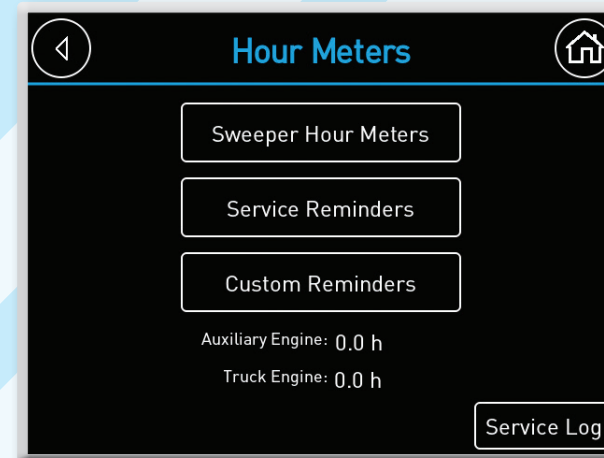
# BlueLogic<sup>®</sup> Control System

## On-Board Diagnostics (OBD)



**OBD for Auxiliary Engine and Sweeper:** The in-cab display delivers code reader functionality by providing fault information for the auxiliary engine and sweeper via detailed on-screen messages when a fault is active. Active auxiliary engine and sweeper faults can also be viewed on Status Pages within the BlueLogic Display.

**Operator Feedback through Switch Packs on Control Console:** Each individual multiplexed switch integrates color LED indicator lights (light blue-off, green-on, amber-standby, red-fault) giving operators instant feedback on sweeper functions.



## Hour Meters and Reminders

### Sweeper Hour Meters (Trip and Total):

- Auxiliary Engine
- Pick-Up Head
- Gutter Broom(s)
- Water Pump (If Equipped)
- Blower
- BAH Broom (If Equipped)

**Service Reminders:** Pre-programmed service reminders with hour meters for the auxiliary engine and sweeper scheduled maintenance items will activate in the form of visual messages and audible alarms.

**Custom Reminders:** Can be created in both days and hours which will activate with custom messaging on the display. These reminders will be logged.

## Logs

### Logs by Title, Date, Time, and Measure:

- Service Reminder
- Hour Meter Reset
- Fuel Usage
- Custom Reminder Reset
- Water System Winterization
- Sweeper Output Fault
- Sweeper Service (Fluid & Filter Changes)
- Water Usage (Included with optional in-cab Water Level Gauge available on select models)
- Overspeed (Warning & Interrupt)
- Hydraulic Oil Alert (Oil Level & Temperature if equipped)
- Odometer Reset (Miles and Hours Swept)

## Statistics

**Sweeper Odometer:** Included in the display, records total miles swept and trip miles swept, trip hours swept and trip average sweeping speed when the pick-up head is down and auxiliary engine is above idle.

**Fuel Usage Statistics:** Calculated fuel usage for the auxiliary engine is logged and displays Trip Fuel Usage, Fuel Trip Hours, Average Fuel Economy and Instantaneous Fuel Rate.

**Water Usage Statistics:** The Water Usage is calculated and displays Trip Water Usage, Water Trip Hours, and Average Water Usage. (Included with optional in-cab Water Level Gauge available on select models).

## Auto Sweep Interrupt (ASI)

**ASI:** Optional System designed to interrupt sweeping functions by bringing the blower to idle and all sweeping gear to the stowed position when any of several parameters are met. The transmission gear placed in reverse and the "ASI RESET" switch being engaged, are two of several parameters that can engage ASI. The "ASI RESET" switch will reposition all functions to prior setting(s) and can be used as a one button start/stop switch during sweeping to interrupt/resume all sweeping functions.

**Overspeed Interrupt:** Included with ASI and when enabled, is another way to activate ASI. It allows for a two-stage process to prevent sweeping at excessive speeds by warning the operator at a set configurable speed and then by activating ASI at a set configurable speed.